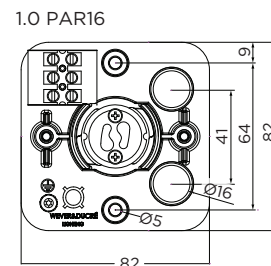
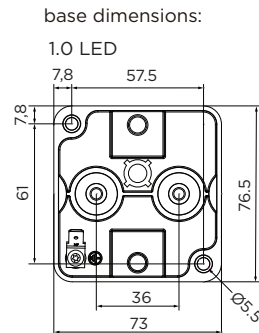
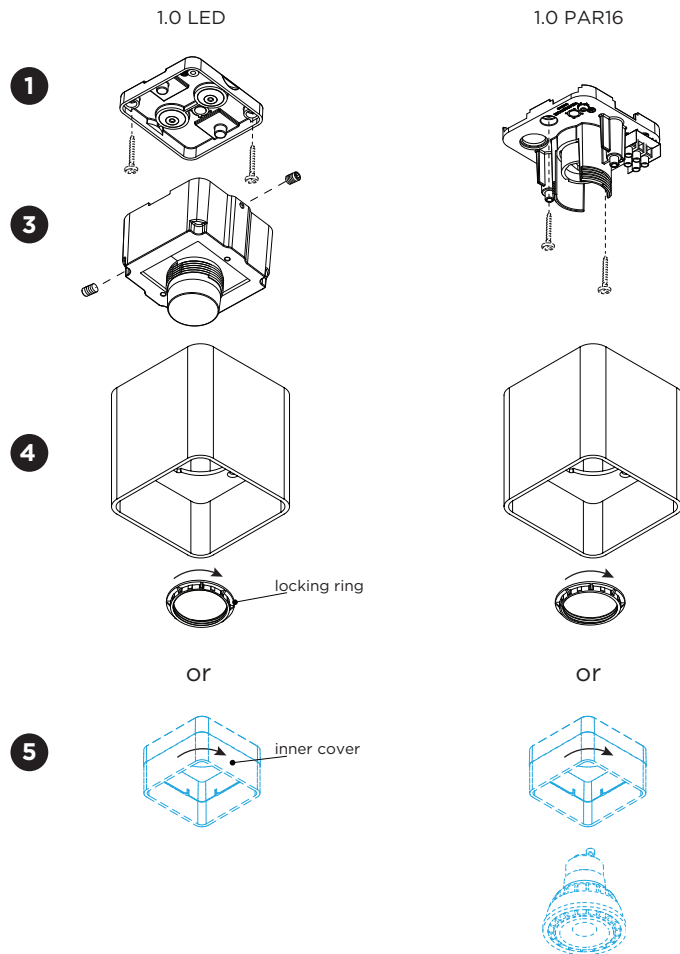


DOCUS CEILING

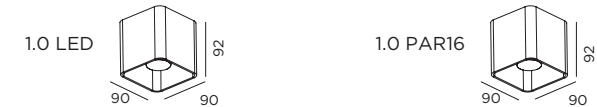
INSTALLATION INSTRUCTIONS | APRIL 2023



Always use a matching grommet in the overview table.

	A	B	C
use pin to make hole, not a knife			
CABLE			
TYPE	ROUND H05RN-F H07RN8-F H07RN-F	ROUND H05RN-F	ROUND
OUTSIDE Ø	min 6.8mm max 8.9mm	min 5mm max 6.8mm	min 1.5mm max 2.6mm
CONDUCTION SECTION	2or3x 0.75mm ² 2or3x 1.0mm ² 2or3x 1.5mm ²	2or3x 0.75mm ² 2x 1.0mm ²	0.75mm ² 1.5mm ²

DIMENSIONS



MOUNTING INSTRUCTION

- For LED: remove the mounting base from the LED module by loosening the socket screws and mount it on the ceiling with screws (screws are not included).
For PAR16: directly mount the mounting base on the ceiling with screws (screws are not included).

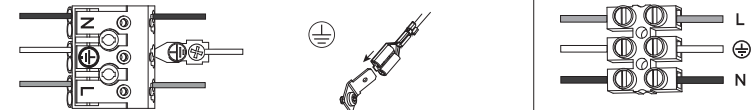
2 POWER CONNECTION

Connect to 220-240V.

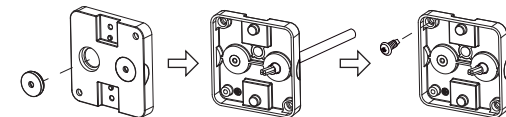
Connect the earth cable.

PAR16 version

LED version



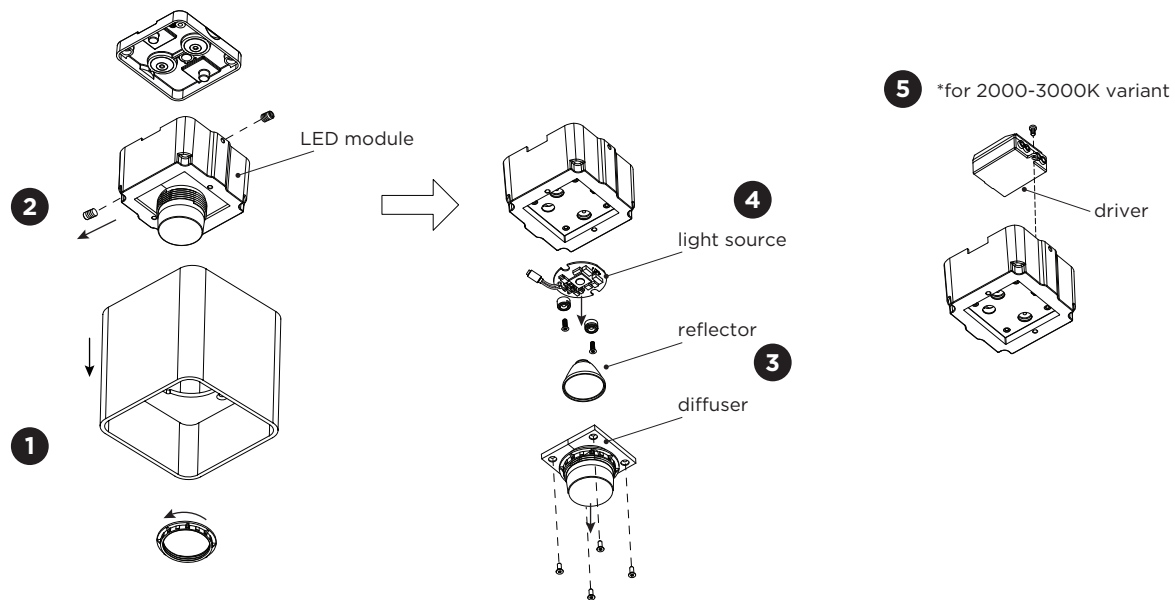
For LED: always use a matching grommet based on the used 220-240V cable and the corresponding type in the overview table.



- For LED: attach the LED housing on the base by fixing the two socket screws.
- For LED: attach the cover to the LED housing by screwing the locking ring.
For PAR16: attach the cover to the base by screwing the locking ring.
- OPTIONAL:**
Inner cover: put the inner cover in the outer cover by screwing.
With inner cover: max. 10W. (In this case the locking ring is no longer needed.)

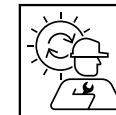
DOCUS CEILING

INSTALLATION INSTRUCTIONS | APRIL 2023

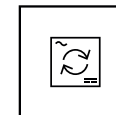


DISMOUNTING AND RECYCLING INSTRUCTIONS only for 1.0 LED Light source & driver*

- 1 Unscrew the locking ring and remove the cover.
- 2 Remove the two socket screws and disconnect the wires to dismount the LED module from the base.
- 3 Loosen the screws and remove the diffuser and reflector.
- 4 Disconnect the wires, loosen the screws and remove the light source.
- 5 *For 2000-3000K variant: Loosen the wires and unscrew the driver to remove it.



The light source is replaceable by an authorized professional. For advice contact your Wever & Ducré customer service contact point.



The driver can be replaced by the end user.*

This luminaire contains a light source with the corresponding energy class:

colour temperature	Energy class
3000K	A ↑ G D
2700K 2000-3000K	A ↑ G F

*only applicable on the 2000-3000K variant