

# ROOMOR WALL 3.0

06-Sep-2018

## 3.0 PAR16

max. 35W | GU10 | 100-240VAC | 50-60Hz  
 CE IP20 45°/45° 30°/30°

### BODY COLOUR

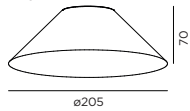
black texture (Cable Plug with hand switch) 339120B\_\_  
 black texture (Cable base round) 339220B\_\_

### OPTIONAL

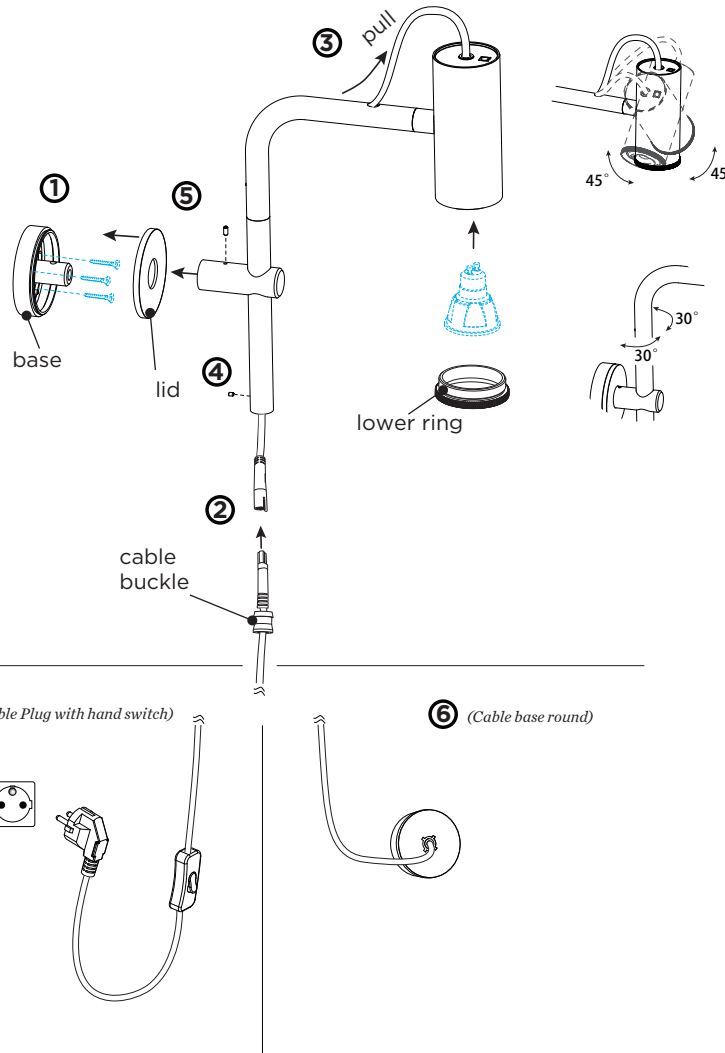
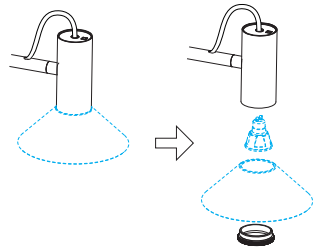
No shade	00
SHADE 1.0	
black texture	B1
black texture + gold	K1
felt grey (max.15W)	F1

for PAR16 lamps see our catalogue

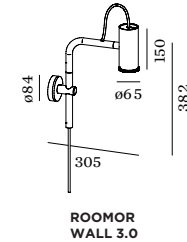
### SHADE 1.0



mount Shade:



## DIMENSIONS



## MOUNTING INSTRUCTION

- Open the lid, and mount the base on the wall, and then close the lid by pressing.
- Connect the cable plugs.
- Pull the cable up so that the connected plugs can get into the tube of the luminaire body.
- Put inside by pressing and fix the cable buckle with the allen screw.
- Install the luminaire body on the base and fix it with the allen screw
- for Cable Plug with hand switch:  
Power connected with the plug.

for Cable base round:

Mount the round base on the wall

**(You have to turn the cover counterclockwise a quarter in order to loosen it from the base and mounting back on is by turning clockwise.)**

## POWER CONNECTION

Connect the wires  
 connection: STANDARD version

