

# ROOMOR FLOOR 1.0

05-Sep.-2018

## ROOMOR FLOOR 1.0 PAR16

max. 35W | GU10 | 100-240VAC | 50-60Hz  
 CE IP20 45°/45° 30°/30°

### BODY COLOUR

black texture 638120B\_

### OPTIONAL

No shade 00

### SHADE 1.0

black texture B1

black texture + gold K1

felt grey (max.15W) F1

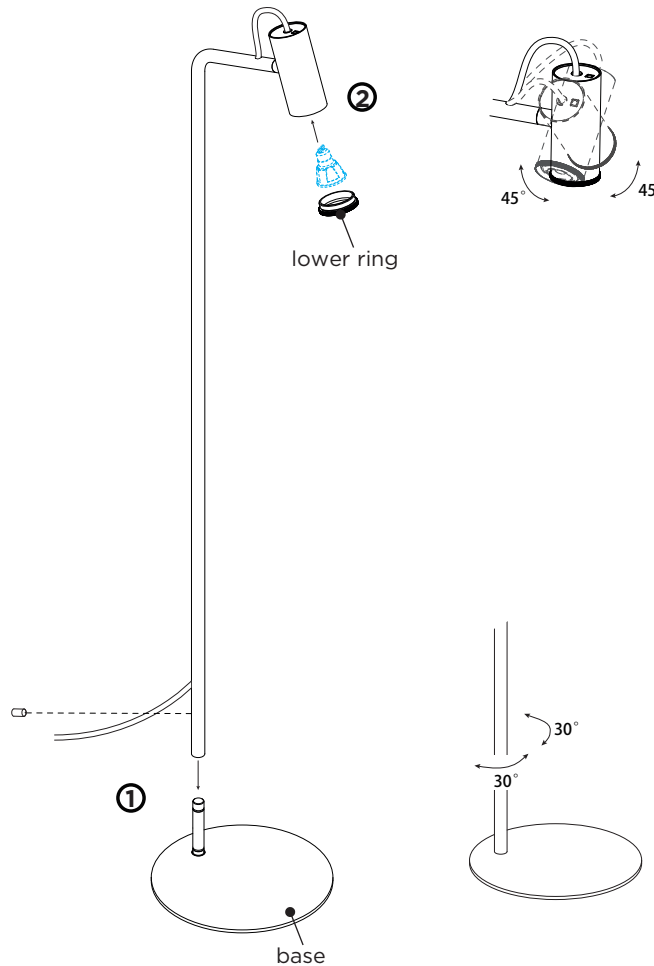
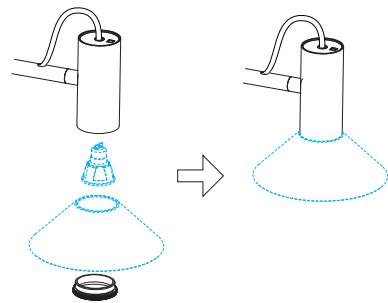
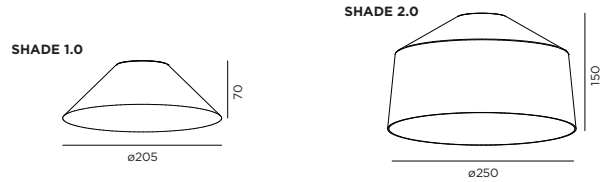
### SHADE 2.0

black texture B2

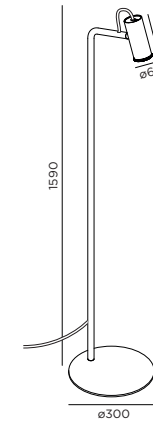
black texture + gold K2

felt grey (max.15W) F2

for PAR16 lamps see our catalogue



## DIMENSIONS



ROOMOR FLOOR 1.0

## MOUNTING INSTRUCTION

- 1 Install the lamppost on the base; and lock them with the allen screw.
- 2 Unscrew the lower ring of the luminaire body, install a bulb (bulb is not included), and then screw the lower ring back.
- 3 Power connected with the plug.

