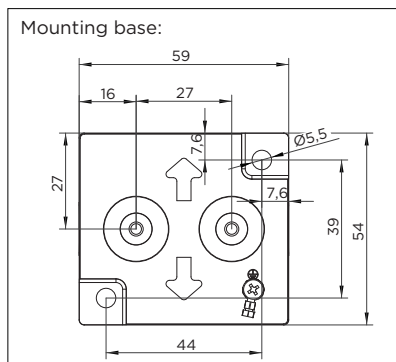
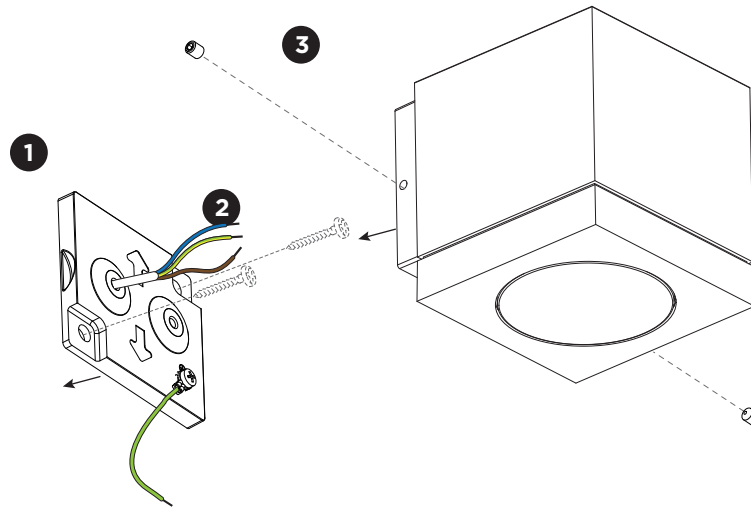


# TUBE CARRÉ wall 1.0 LED

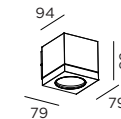
INSTALLATION INSTRUCTIONS | AUGUST 2023



Always use a matching grommet in the overview table.

	A	B	C
CABLE			
TYPE	ROUND H05RN-F H07RN8-F H07RN-F	ROUND H05RN-F	ROUND
OUTSIDE Ø	min 6.8mm max 8.9mm	min 5mm max 6.8mm	min 1.5mm max 2.6mm
CONDUCTION SECTION	2or3x 0.75mm <sup>2</sup> 2or3x 1.0mm <sup>2</sup> 2or3x 1.5mm <sup>2</sup>	2or3x 0.75mm <sup>2</sup> 2x 1.0mm <sup>2</sup>	0.75mm <sup>2</sup> 1.5mm <sup>2</sup>

## DIMENSIONS



1.0 LED

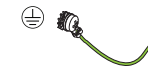
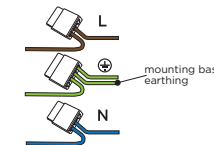
## MOUNTING INSTRUCTION

**1** Remove the mounting base by loosening the socket screws and fix it to the wall with screws (screws are not included).

**2** POWER CONNECTION

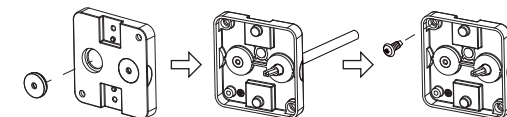
Connect to 220-240V.

Connect the earth cable.



Always use a matching grommet based on the used 220-240V cable and the corresponding type in the overview table.

for example:



Push the grommet into the back plate.

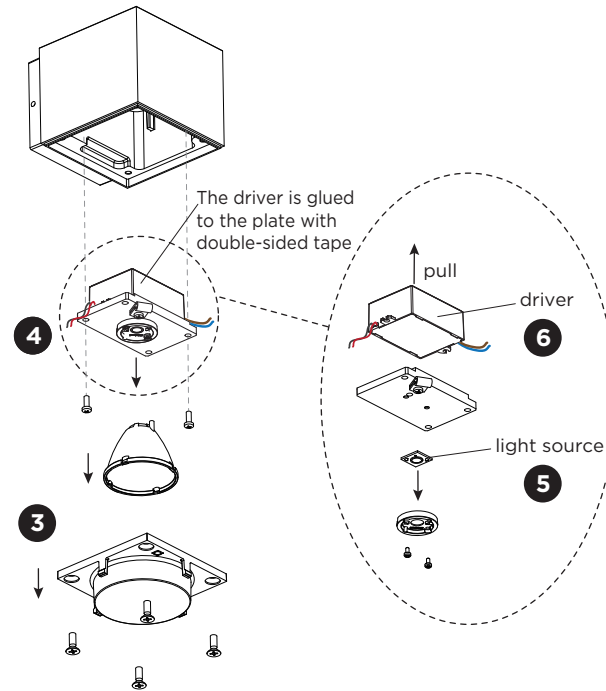
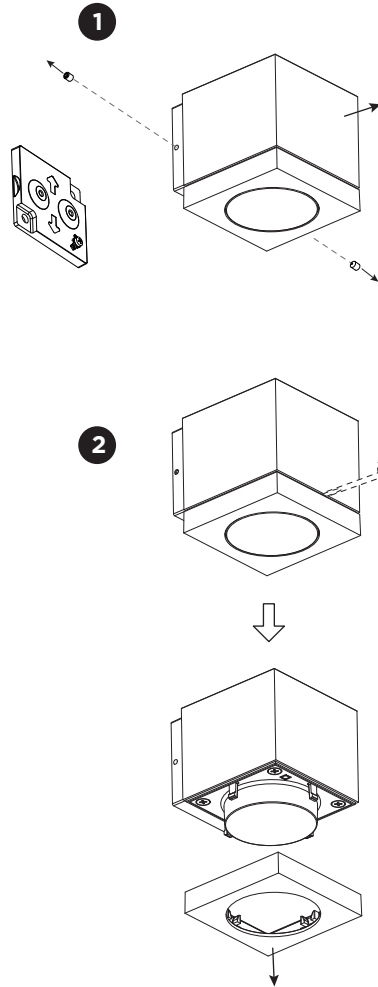
Pull the cable through the back plate.

Mount the back plate on the wall.

**3** Fix the fixture to the mounting base with the socket screws.

# TUBE CARRÉ wall 1.0 LED

INSTALLATION INSTRUCTIONS | AUGUST 2023



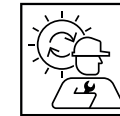
## DISMOUNTING AND RECYCLING INSTRUCTIONS

### Light source & driver

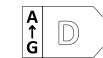
- 1 Dismount the fixture from the wall by loosening the socket screws and the wiring.
- 2 Remove the cover with a flat screwdriver.
- 3 Remove the diffuser and reflector.
- 4 Remove the driver and LED assembly.
- 5 Unscrew the holder to remove the light source.
- 6 Pull the driver from the plate.



The driver is replaceable by an authorized professional. For advice contact your Wever & Ducré customer service contact point.



The light source is replaceable by an authorized professional. For advice contact your Wever & Ducré customer service contact point.



This luminaire contains a light source with the energy class D.